

HARRY CHARLES

Property Specialists

Call us
01923 731313

INTRODUCING

Diamond Road, Watford WD24 5EN

3 Bedroom House - Mid Terrace for sale

£395,000

Price



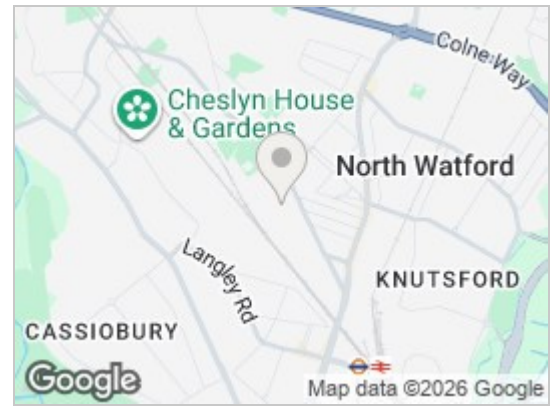
3 Bedrooms/1 Bathrooms EPC Rating: C

- Three Bedroom Terraced Family Home
- Kitchen
- Entrance Hall
- Covered External Utility Area
- Council Tax Band C
- Lounge/Diner
- Down Stairs Bathroom
- Three Bedrooms Off Landing
- Rear Garden
- Replacement Double Glazed Windows

Floor Plan

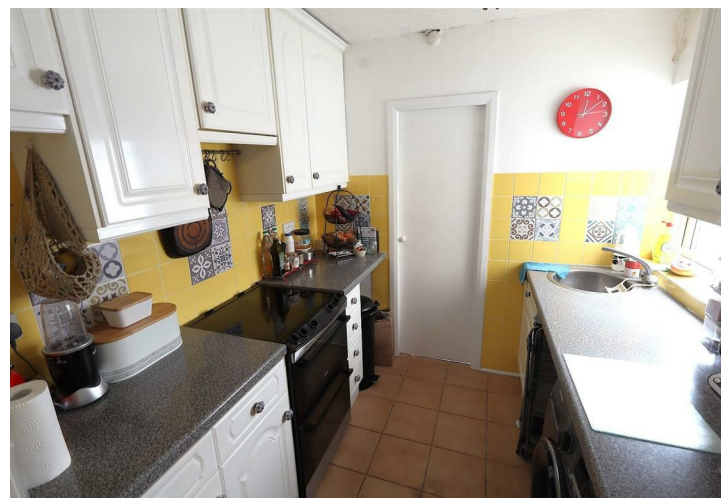
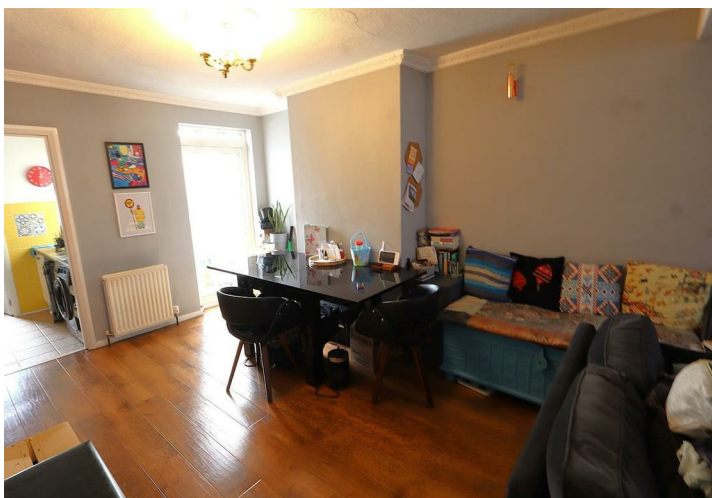


Map



Energy Efficiency

Energy Efficiency Rating		Current	Potential
Very energy efficient - lower running costs			
(92 plus) A			88
(81-91) B			
(69-80) C		71	
(55-68) D			
(39-54) E			
(21-38) F			
(1-20) G			
Not energy efficient - higher running costs			
England & Wales		EU Directive 2002/91/EC	



These particulars, whilst believed to be accurate are set out as a general outline only for guidance and do not constitute any part of an offer or contract. Intending purchasers should not rely on them as statements of representation of fact, but must satisfy themselves by inspection or otherwise as to their accuracy. No person in this firm's employment has the authority to make or give any representation or warranty in respect of the property.